

The Chesapeake Paddler



Volume 32 Issue VIII

Publication of The Chesapeake Paddlers Association, Inc.

October 2022

It's time to vote for CPA Officers for 2022

Voting is now open for CPA Officers (Coordinator, Secretary and Treasurer) and the six members of the Steering Committee for the 2022-3 term (November to November).

Members will be able to vote online at <https://www.cpakayaker.com/chesapeake-paddlers-association-inc-e-voting/> or use the ballot on page six to vote by mail. Members will need their CPA membership number to vote. Your number will be emailed to you in October and it is also on your CPA membership card.

The Annual Meeting will be held on **Sunday, November 6, 2022 at noon at the Cult Classic Brewery**, 1169 Shopping Center Road, Stevensville, MD 21666. Members can also vote in-person at the meeting. If the meeting is held via ZOOM due to COVID, voting will be done online or by mail only.

Below are the candidates who have accepted nomination for their respective positions and the "stump speeches" for their candidates.

Coordinator

Paula Hubbard

It has been 12 years since I started paddling with CPA. Along the way I have met many wonderful people and paddlers. I have served on the Steering Committee for many years and now that Bill Smith is stepping down, I believe that I can serve both CPA and the paddling community as Coordinator. CPA has many resources that are used to promote paddling safety, education, water access and conservation. As coordinator, these will also be my goals. I will continue to volunteer my time as an instructor to CPA training events and will assist trip leaders in planning and leading paddles. We need to continue to encourage our members to lead paddles. I will continue to promote diversity within our club and the paddling community. We will only grow when we invite more paddlers of all levels to join regardless of their equipment. I will always encourage paddlers to improve skills though training and practice. It's all about the love for our sport.



Secretary

Sue Stevens: It is an honor to serve as our club Secretary and would be a pleasure to serve again in 2023. No way I could be the secretary and keep up with our members without help from our club officers and loyal Pirates.



My tasks as Secretary include managing the off-line CPA membership database, the club meeting minutes, Paddler News e-distribution, and commuting to the CPA Mailbox in Greenbelt. I also manage our CPA membership renewal and

dues status each month, assist at SK101 and help at Gear Day. I organize the weekly locations and schedule for the Pirates of Arundell. I am looking forward to a brand new safe, healthy and sane kayaking year in 2023!

Treasurer

Rich Stevens: I have been Treasurer and Corporate Agent for CPA for a number of years now, and would be honored to serve again. Now that the Club is incorporated and on a sound legal basis, I've worked to ensure that all the proper federal and state filings have been kept up to date. I've also worked hard to ensure that members are reimbursed in a timely manner, all payments are properly recorded and deposited, and that the necessary paperwork is kept up to date in an orderly fashion. I plan on continuing to work to seek other ways for the Club to give back to our members and to ensure that Club funds are spent wisely. Although I generally hate paperwork, I've enjoyed my work for CPA. No fame and glory, but a necessary part of a corporation.



Candidates for Steering Committee (Listed alphabetically)

Lisa Arrasmith: I'm running for re-election to the Steering Committee. If reelected I will continue my efforts for public water access in Anne Arundel County and beyond and hopefully run some trips next year.



Public water access in Anne Arundel County in 2022 has been a mixed bag. On the good side, the improvements at

(Continued on page 3)

From the CPA Coordinator

CPA Election Time

It is the time of year to elect the CPA club officers. You can vote via email, U.S. mail or wait and vote in person at the annual meeting. Each member family is allowed one vote, in other words one vote per membership

The **Annual Meeting** will be held on **Sunday, November 6** at the **Cult Classic Brewery**. The brewery opens at 11 AM with the meeting beginning about noon and lasting to 3 PM. The Annual Meeting is a great time to socialize and meet the club officers. This year four members will be given awards for their outstanding leadership and volunteerism. CPA is an all-volunteer organization so without members stepping up and volunteering the club would cease to exist.



Bill Smith

After six years as coordinator, I am stepping down, but I will remain on the Steering Committee unless voted out. I want to thank all the members who gave me support and encouragement over the past six years. Your help and friendship means a lot to me. Overall, it has been a pleasant experience.

FALL OUT OF YOUR BOAT DAY—This year the annual Fall Out of Your Boat day had a new date and location. The past several years, it was held the first Sunday of June at Truxtun Park in Annapolis, but this year the event was delayed as Truxtun Park was unavailable due to an electric shock hazard in the water, not good to fall out of your boat and then get lit up by stray current. After a two-and-a-half-month delay, Jesse and Lise Parker offered the use of the Selby-on-the-Bay Community Center on the South River as an alternative location. It seemed odd to have this event so late in the year, but it worked out better than expected.

I think all the attendees had a great time and loved the new location. There were plenty of new kayakers with some flipping over for the first time, while others were looking for guidance on getting back in their boat and other pointers to improve their skills. I am hoping that future Fall Out of Your Boat events can be held there. The new location provided some new places to explore. A group of veteran paddlers along with several new paddlers paddled around Turkey Point Island. This gave some of the new paddlers a chance to experience some "bumpy" water as we rounded the northeast side of the island. I want to thank Jesse and Lise for supplying the new and improved location, all the volunteers who helped with instruction and all the attendees for making it a great event. A fun time was had by all.

Bill Smith

Coordinator

Charles County Planning Input Needed



Charles County Recreation is currently in the development phase of three new parks - Waldorf Park, Popes Creek Waterfront Park, and La Plata Farm Park. Popes Creek is a 179-acre parcel that includes the former Gilligan's Pier bar and marina. You can read more about plans for Pope's Creek [here](#). Funding for final design and construction of the parks is contingent on continued appropriations in the County's Capital Improvement Program.

Your input is needed for water access improvements to this parcel, including a kayak launch, and possibly a paddle-in campsite. Contact Charles County Recreation Parks and Tourism Department at [301-932-3470](tel:301-932-3470) or via the online form at <https://www.charlescountyparks.com/about-us/contact-us>. The next opportunity for public input is November 14 at the Waldorf Senior Center. You can also share ideas with [James Armel](#), a task force member and member of Southern Maryland Paddlers.



(Continued from page 1)

Beverly Triton Park, promised since 1985 and slow rolled three times since 2019, are in construction. The completion, however, has slipped from October 2022 to November 2022+. On the bad side, the Anne Arundel County administration is apparently determined to convert Homeport Farm Park into a rowing center, a de facto privatization of the only usable public water access point on the South River. It looks like a re-run of the "community boathouse" takeover strategy of Jack's Boathouse on the Potomac in Georgetown. If the neighbors around the park litigate, Homeport may replace Crystal Springs as the painfully long running land use lawsuit on the South River in Annapolis. Stay tuned for efforts to keep Homeport Farm Park open to the general public.

Please vote for me and I'll do my best to get us all to the water and have a lot of fun when we get there. Every child should grow up with the water, not find the water in midlife like me.

Elizabeth Boyd

I have served on the Steering Committee since 2019 and would be honored and pleased to continue in this capacity. CPA has offered me education, camaraderie, and unparalleled opportunities for getting out on the water, and I would like to "pay it forward" for paddlers new to the sport. I am especially interested in supporting the trip leader training necessary to re-populating our calendar; expanding outreach to new-ish paddlers via allied watersports and environmental organizations; and, supporting our water access advocacy. A member of CPA since 2011, I regularly paddle with the Pirates of Arundell, am a KIPP survivor and SK102 alum, and served as co-editor of the *Chesapeake Paddler* for three years. This summer I accomplished a personal goal: paddling around New York City in the 2022 Gerry Blackstone Manhattan Kayak Circumnavigation. I would be honored to serve again and will work to further the interests of the sea kayaking community.



Marylin Cooper

I would like to continue the outstanding work CPA has been doing to bring more people into the kayaking world as a member of the Steering Committee. I have enjoyed the years I have been able to participate in a sport that brings together so many people of diverse and unique backgrounds.



Smiles are abundant and people are helping by also looking out for each other and nature which are both priceless. I would like to see even more diversity in the people we welcome to not only enjoy the sport but also to become part of our CPA kayaking family. Any group or organization that wants to thrive must reach out to new individuals to share ideas, knowledge, and support. This sharing of knowledge or skills can be done through an event, class or just paddling beside someone more experienced. Through shared experience, CPA will become a stronger com-

munity of paddlers. I hope you will join with me with your support in the effort.

Bill Smith: It has been a real privilege to serve as the CPA Coordinator for the past six years and would appreciate your continued support for the upcoming year.



I have received a lot of support from our members and greatly appreciate it. I have high hopes for this coming year as we continue to climb out of the COVID fiasco with improved Club activities and trips.

Katherine Neale

I am honored that several members of CPA have nominated me to be a member of the Chesapeake Paddlers Association Steering Committee.



I have been a CPA member since June 2006 and have enjoyed many of the activities and fellowship that the Club has to offer.

If re-elected, some of the things I would like to work on are: 1) Recruiting and training of more trip leaders from the membership so we can offer more trips; 2) Getting more members more involved in their local Piracies; 3) Promoting the Club to new paddlers; and 4) Helping to support safe and responsible sea kayaking.

Gary Trotter

I am honored to be nominated to serve as a member of the Chesapeake Paddlers Association Steering Committee.



My wife Michelle and I have been a member of the CPA since November 2017. We have attended SK101 and 102, participated in various piracies and several other Club activities.

I have enjoyed meeting and fellowship with members of the CPA paddling community, improving my paddling skills, and exploring different activities for sea kayaking.

If elected to serve I would look for opportunities to attract, encourage, and retain new members; lower barriers to entry for novice paddlers; stress importance of water safety; and to cultivate increased access and usage of Chesapeake Bay and tributaries.

CPA Aging Out

It has come to our attention that CPA is getting OLDER! I know, SHOCKING! Actually, several long-time CPA members have given notice that they will no longer be paddling, with us, or at all, and are selling off their kayaks and gear. Last month, Larry and Georgia Hewitt of Fredricksburg, VA, placed a unique ad seeking people to “adopt” their lonesome kayaks. Suitable adoptees were found and the kayaks are now happily back in their watery element. The Hewitts joined CPA in 2012.

Long-time Pier 7 and POA paddler Nick Demos of Annapolis has an ad in this edition to sell off his kayak gear [Check it out; some good value there]. Nick joined CPA in 2000.



Larry and Georgia Hewitt



Ed Santelmann photo by Paula Wanzer

Finally, possibly our oldest active paddler Ed Santelmann of Annapolis notified us that he will no longer be paddling and had sold off his kayak and gear. Ed joined CPA in 2007, but has been paddling much longer. Rumor has it that Ed is nearing the century mark, but you would never have known it watching him on the water.

We will miss these and other folks who have given up kayaking under the pressure of age. However, this is not a farewell...CPA has plenty of social activities off the water and we expect to see ALL of the CPA family of paddlers—Past and Present and be able to chat and share old and new adventures. On a positive note, there are more than 65 LIFE MEMBERS of CPA who have NOT aged out of kayaking yet. See you on the water.

More Pictures from Fall Out of Your Boat Day 2022



Greg Welker teaching wet exit photo by Ricardo Stewart



Tom Heneghan teaching photo by Ricardo Stewart



Doing a paddle-float reentry photo by Brian Blankinship



Assisted rescue photo by Brian Blankinship

Man Has Gourd-geous Kayak



Duane Hansen boards his pumpkin kayak in Nebraska *photo from [The Guardian](#)*

As reported to us by Al Mindline, just in time for Halloween, a [Nebraska](#) man has set a new world record after he paddled 38 miles down a river in a huge, hollowed-out pumpkin he grew himself.

Duane Hansen of Syracuse, Nebraska, completed his journey last week, according to a [Facebook post](#) from the city of Bellevue on Saturday. See the full story at <https://amp.theguardian.com/us-news/2022/aug/29/pumpkin-paddling-river-record-duane-hansen>

Lighthouse News

New Point Comfort Lighthouse—CPA paddler Al Tilson reported that he was learning about one of our more famous lighthouses. The New Point Comfort light was built in 1804 and first lit on January 17, 1805. This and other fascinating facts are found in an online history of the lighthouse, in it's various incarnations, at <https://www.newpointcomfortlighthouse.org/>.

Al lives in St. Petersburg, Florida, but has traveled up to the Chesapeake Bay many times to paddle with us while researching a history of enslaved and free maritime workers in Revolutionary and antebellum Virginia.

Hooper Island Lighthouse—This caisson-style lighthouse is available for purchase at the bargain price of \$15,000. There are a few drawbacks:

- The lighthouse is in such poor condition that a major rehab is needed to remedy toxic conditions from asbestos and lead paint,
- The U.S. Navy won't let you live in it because it's in a bombing range, and
- There is no dock or shore to land and access it. Other than that, such a deal. See all the details at <https://www.washingtonpost.com/dc-md-va/2022/09/02/chesapeake-bay-lighthouse-sale/>



Al Tilson

The auction sale recently concluded with a price of \$292,000, but the owner will remain anonymous until details are settled. Maybe they'll move it away???



New Point Comfort Lighthouse on one of Bill Dodge's campers in 2005 *photo by Ralph Heimlich*



Hooper Island Lighthouse *photo by GSA*

Share your paddling adventures!

Do you enjoy reading about the paddling adventures, local and distant, of other members? Do you like getting new ideas for paddling trips?

Are you advocating for paddling access or amenities in your area?

Have you pondered questions relating to kayak gear? Variety is the spice of life, and of newsletters.

Please write an article reflecting your thoughts, experiences, and discoveries to share with our paddling community.

We all become a bit wiser and excited to be on the water again. We need your input to make *The Chesapeake Paddler* the best it can be.

Submit stories or ideas to news_editor@cpakayaker.com. We look forward to sharing your story.

Vote for CPA Officers and Steering Committee Members

At the CPA Annual Meeting on November 6, 2022, we will discuss CPA business, elect the CPA Officers (Coordinator, Secretary, Treasurer) and the six Steering Committee positions for the 2022 term (November through November).

Potential candidates were asked to send in their nominations and a brief stump speech by October 1 so they could be listed on the ballot below and their speeches printed in this newsletter and posted on the CPA website at <https://www.cpakayaker.com/cpa-officer-election-stump-speeches/>). Any member may also conduct a "write-in" campaign.

Voting is customarily done online, by mail or in-person at the Annual Meeting. If the meeting is held via ZOOM due to COVID, voting will be done online or by mail only.

You may vote online at: <https://www.cpakayaker.com/chesapeake-paddlers-association-inc-e-voting/> or vote by mail by using the ballot below.

You will need your member number to vote. An email will be sent in October to your email of record with your member number. It's also on your CPA membership card. Only one valid ballot per membership, including family memberships.

Official Mail-in CPA Ballot

Your CPA Member Number _____ (required for a valid ballot, it will be emailed to you in October).

Officers (choose one of each)

Coordinator (vote for one)

___ Paula Hubbard
___ (Write-in Candidate) _____

Secretary (vote for one)

___ Sue Stevens
___ (Write-in Candidate) _____

Treasurer (vote for one)

___ Rich Stevens
___ (Write-in Candidate) _____

Steering Committee (choose six)

___ Lisa Arrasmith
___ Elizabeth Boyd
___ Marilyn Cooper
___ Katherine Neale
___ Bill Smith
___ Gary Trotter
___ (Write-in Candidate) _____

If voting by mail: please print out this page, vote, place the ballot in a stamped envelope, and mail it to:

The Chesapeake Paddlers Association, Inc.

Attn: Ballot

P.O. Box 341

Greenbelt, MD 20768-0341

Ballots must be received by November 5, 2022 to be counted.

A Paddle on the Patuxent and Jug Bay

By Paul Fofonoff

On Sunday, August 28, I went for a paddle on the Patuxent River, starting at the Patuxent Wetlands Park at Waysons Corner, at the Rt 4 bridge about 15 miles from my house. The temperature was in the 90s, so as soon as I got in the boat, I dipped my hat in the water. The tide was low when I launched, and rising, but the current was weak. The marsh was a yellow-green band, due to the flowering of wild rice (*Zizania aquatica*).

I was surprised to see stalks of Wild Rice with bags attached. At first I thought these were some kind of flower. Then I remembered that lots of people are trying to restore Wild Rice in the Chesapeake. The stands in Jug Bay were once threatened by nonmigratory Canada Geese. Fencing (Geese can't fly in the breeding season) and some controlled



Woods and Wild Rice all photos by Paul Fofonoff

hunting enabled the rice to recover. Greg Kearns, Jug Bay Park Naturalist, is responsible for much of this work. Wild rice is an important food to many marsh birds and animals, including the [Sora Rail](#) (*Porzana carolina*), which I have not yet seen. Now people are trying to restore rice in other places, including the polluted [Anacostia River](#).

I stopped for a rest at Mount Calvert, a historic colonial plantation house. After that, the channel narrowed at the site of a former RR bridge—there are two ancient pilings at the crossing. The historic alignment of the [Chesapeake Beach Railroad](#) went all the way from DC to North Beach on the Bay. As I paddled, the river opened up to Jug Bay, a large freshwater tidal lake.



Narrows above Jug Bay

I paddled to a spot called Pindell Point. About 3 years ago, looking for shelter from a thunderstorm, I landed here and followed the trail up the steep wooded bluff to good views of Jug Bay and an active [archaeological dig](#) (off limits to the public!). As I was about to launch from Pindell Point, a Jug Bay caretaker came by on an evening walk. He had a story about the archaeological site. The volunteers and students were finding artifacts from stone-tool-making. The rocks and flints must have come from the Piedmont or Mountain regions. They were finding stone flakes, from tool-making. Then a student called out, "Here's a big flake!!!" It was a nearly-intact 13,000 year-old Clovis Point, one of the prized objects of American archaeology—normally only found out West in the Texas-New Mexico-Colorado region. . She got the nickname 'Big Flake' for the rest of the project.

This time, trying to land with kayak's bow on land, and the midsection in water more than knee-deep, I capsized. In 90 F weather, that was refreshing. Near Pindell Point, there was a white waterfall of invasive Asian Clematis (*Clematis orientalis*) cascading down a tree. I made it back to my car round dusk. I'd only paddled 6 or 7 miles, but was too tired to sleep well. I guess I'm not 25 anymore, but this was a great trip.



Jug Bay from Pindell Point



Mount Calvert



Cloud reflection

Update story on ENC NOAA Charts

by Ralph Heimlich

The problem with technology is that it is always advancing. In the [Jan/Feb 2019](#) edition of the *The Chesapeake Paddler*, I discussed a method for using NOAA Raster navigation charts in Google Earth to produce customized nav charts for kayak trips. Unfortunately, later in 2019, [NOAA announced](#) that it would “sunset” traditional paper and raster digital navigation charts beginning in 2021 and completely by 2025. The new technology that will replace paper and digital chart images is called **Electronic Navigational Charts (ENCs)**.

The ENC product format is specified by the International Hydrographic Organization (IHO). Each ENC is a digital database that stores the location and shape of charted features as pairs of latitude and longitude coordinates. This is known as “vector format” data. Database records associated with each feature provide detailed information, such as the feature’s color, shape, height, purpose, quality of position, and other attributes. The data contained within ENCs can be used by electronic navigation systems, called chart plotters, to enable safer voyage planning and route monitoring. This includes initiating warnings and alarms when a ship is heading into shallow water or toward other dangers to navigation. Updated ENC revision files are available weekly. When ENC revision data is loaded many navigation systems apply these updates automatically. ENCs will continue to be produced and enhanced after all raster format charts are canceled. While this is great news for commercial mariners and operators of larger recreational vessels, most kayakers don’t use chart plotters while underway, or even have one. This article provides information for kayakers on how to access and use ENC charts in two ways.

NOAA Online Custom Chart Tool—First, NOAA has developed an online custom chart tool that accesses and uses ENC charts. It is online at <https://devgis.charttools.noaa.gov/pod/>. A [detailed user guide](#) is available, and a quick start introduction is provided at <https://devgis.charttools.noaa.gov/pod/NOAACustomChartQuickStartGuide.pdf>. After zooming in to your area of interest using either the “+” and “-” icons on the tool or your mouse wheel, you need to check some settings for printing your chart. The print settings icon lets you specify the scale of the chart and the size and orientation of the paper you will be printing it on. Scale is the relationship between distance on a chart and the corresponding distance on the ground, expressed as ratio, such as 1:10,000 (1 inch equals 10,000 feet). Nautical charts and ENCs are broken into six categories, based on their scale. Small scale charts, such as Overview and General charts cover large areas – like the North Pacific Ocean – and show the least amount of detail. Large scale charts, such as Harbor or Berthing charts, cover small areas – like a harbor or even just a particular set of wharfs or piers – and show the greatest amount of detail. Coastal and Approach charts are in the middle. These categories are referred to as a chart’s “Intended Use” in NCC and correspond to the six ENC “Usage Bands.” Kayakers are mostly concerned with the Approach charts for near-in coastal waters and the Coastal charts for a more synoptic overview, or a scale range of 1:100,000 down to 1:20,000.



ENC Usage Band No.	Intended Use	Legacy NOAA ENC Scale Ranges	Revised NOAA ENC Scales	Level of Detail Shown on Charts
1	Overview	1:10,000,000 1:500,000	1:5,000,000 1:2,500,000	
2	General	1:1,334,076 1:240,000	1:1,380,000 1:640,000	
3	Coastal	1:600,000 1:150,000	1:320,000 1:160,000	
4	Approach	1:150,000 1:25,000	1:80,000 1:40,000	
5	Harbor	1:31,638 1:5,000	1:20,000 1:10,000	
6	Berthing	1:12,000 1:2,500	1:5,000	

In terms of page size, very few of us have home printers capable of more than letter and legal size paper. Some printers may be able to take a larger sheet (poster size) and break it down into blocks of letter-size sheets for printing your own chart book. Check your printer’s settings to see what it can do. I prefer landscape orientation because of the way the chart lies on my kayak deck.

Based on your chosen printer settings, the “create new extent” button will let you place a red-shaded area the size of the resultant printed chart wherever you position the cursor on the chart shown in the tool. You can use the “move extent” button (green page with a hand in it) to reposition the



printed chart extent to capture what features you are interested in for your trip. Below is an example of two extents, one portrait and one landscape, in the area around the mouth of the St. Mary’s River.

Next, you work with “export chart” button to view the export queue. For each of the charts listed in the queue, you can delete it, reposition it, or export it. Click on the chart listing to work with each extent and it will be highlighted in the chart tool, so you won’t get confused about which is which. Exporting takes a while, so don’t get impatient. The one in this example took 53 seconds. When the “open” button appears, click it and the chart image will be displayed in your browser on a new screen as a .pdf file. You should download it to a file location on your computer where you can print or work with it. Chart 2 for the selections shown here includes scale bars, projection info, date created, and latitude and longitude grid markings.

(Continued on page 9)

(Continued from page 8)

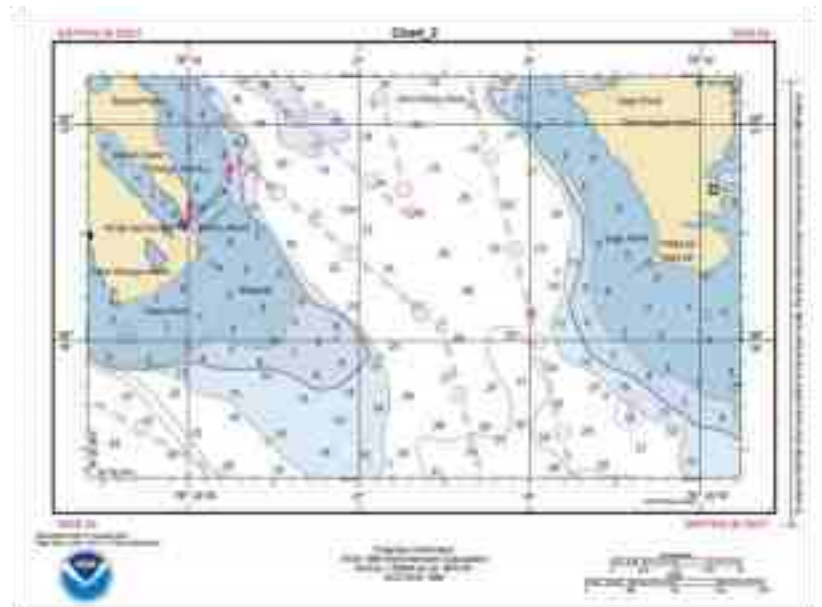
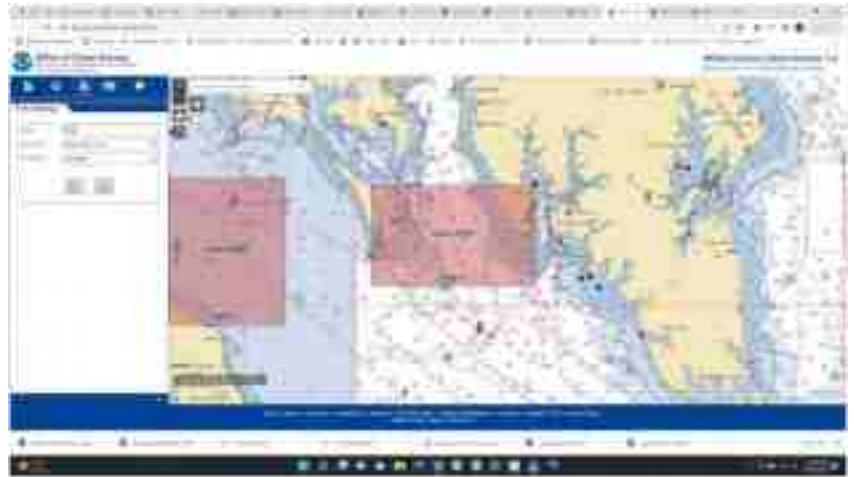
You should play around with different scales and schemes of printing to get a set of charts for your trip that balances the number of sheets you have to print, the detail you want, and synoptic overview you need to put yourself in context while paddling. I like to print an overview chart at a larger scale (say 1:100,000), and then a series of smaller scale charts for detail along the intended route. Be sure the detail charts overlap enough that you can tell how they fit together. I print on [TerraSlate](#) 5 mil laser "paper" that is waterproof and can go on my deck without a map case (25 sheets for \$20 on Amazon). If you are printing with an ink jet

printer, beware: The ink is water soluble and will run even when printed on waterproof paper.



OpenCPN Chart Plotter—I said that large ships and big yachts have onboard chart plotters, but the open source revolution has even reached down to the world of digital navigation. You can download and install a desktop open source

chart plotter from [OpenCPN](#) that is useful as a planning tool and to print NOAA ENC charts. There are versions for Windows, Mac, and several flavors of Linux OS. I suspect that the Mac version can operate on the iPad and there is an [Android version](#) that might work on beefier smart phones, but I don't know how useful it would be on such a small screen and the storage requirements for charts could be significant. If you want a hand-held device for navigation, you should go with a [GPS equipped with NOAA BlueChart navigation charts](#). There are two levels of [user manual](#): Beginning and Advanced. The basic functions you would likely use on the desktop are to load charts, manage the display, chart tracks for planned trips, and drop markers or points of interest (POI).



(Continued on page 10)

(Continued from page 9)

You load charts using the **Options (gear wheel) icon** on the LHS. I found it easy to do as follows:

Navigate to <https://charts.noaa.gov/ENCs/ENCs.shtml> which displays groups of ENCs by Coast Guard District, State, and region.

☒ Select your download (I selected all the ENCs for Maryland).

☒ When you click on the link, a .zip file is downloaded

☒ Clicking on the .zip file in the download bar of your browser creates a directory in the download file

☒ Clicking "Extract All" unzips the files.

☒ I suggest moving this directory from Downloads to some file structure of your own. I use a directory called "Charts" and the MD ENCs are a subdirectory within it.

Route from St. Georges Ramp to Maryland Docks

Basic Advanced

Name: Route from St. Georges Ramp to Maryland Docks

From:

Distance	Plan speed	Course	Departure	Time	Color	Style	Width
5.7184	8	098.145	03112022	11:22:28 AM	LongRNC	Default color	Default

L	Segment	Distance	Bearing	Total Distance	Latitude	Longitude	ETE	ETA	Speed	Start time	Description	Course	ETE
---	000	377.1766	021 °T	0.0000	38° 38.2' N	076° 28.2' W	28 49 17M	04m 31:11:00Z 16...	8			125 °T	
1	001	1.3166	128 °T	1.3166	38° 37.2' N	076° 28.4' W	14M 23S	5/31/2022 20:07 06...	8			043 °T	
2	001	0.6166	041 °T	2.1166	38° 37.7' N	076° 27.9' W	0M 10S	5/31/2022 20:13 06...	8			032 °T	
3	001	0.7166	032 °T	2.7166	38° 38.4' N	076° 27.3' W	0M 06S	5/31/2022 20:20 06...	8			024 °T	
4	001	1.3166	024 °T	4.0332	38° 38.2' N	076° 26.9' W	13M 45	5/31/2022 20:23 06...	8			014 °T	
5	006	0.6166	014 °T	4.7166	38° 38.2' N	076° 26.7' W	0M 20S	5/31/2022 20:30 06...	8			021 °T	
6	007	1.0166	021 °T	5.7184	38° 31.1' N	076° 26.2' W	10M 25S	5/31/2022 20:33 06...	8			Arrival	

Once you've done this, go to the **Options button**, and under the Charts tab and the Chart files tab, click add directory and navigate to the subdirectory you created above to add those charts.

You can manage the display in two places. Under the **Options button** and the Display tab, you can manage how the display refreshes. I basically haven't messed with this or needed to. Under the Vector Chart Display tab, you can manage what information from the chart file is shown.

The **Create Route button** (pencil and segmented line) lets you plot a planned route. Clicking on the icon closes the buttons and gives you the "pencil" to start plotting your route. The route is a series of points from your launch to your destination. Each leg shows you the true bearing, distance in nautical miles, and coordinates and cumulates the total distance. Clicking on the Route and Mark Manager (set of papers) let's you look at planned routes you've laid out, give them names, and get more info, like ETA's to waypoints at the planned speed. This can help you plan a paddle, including the distance covered, where you should be looking for landmarks, and an approximate time frame at an assumed rate of speed. You can use the Waypoints tab to create a new point of interest (POI) that may or may not be on your planned route and label it. For example, you can mark something to point out as you paddle past, or mark a good lunch spot. Click on the chart where the POI is located, right click for properties and you can change the symbol used. Then click on the Waypoints tab to fill in the name of the POI and other info. As usual, the plans are only good until you actually launch!

On the example I created here, I've planned a trip in the vicinity of the mouth of the St. Mary's River, launching at the St. George Ramp (Piney Point Recreation Area) and proceeding down St. George Creek to Russell Point, then across the creek mouth and up the St. Mary's River to Cherryfield Point, Edmunds Point, Windmill Point, Chancellor Point, and on to our destination at St. Mary's City. [You may need to change the zoom on your .pdf app to see the detail in these charts and tables better] The properties are shown in the table. Ignore the first waypoint as it is from your vessel's assumed location, which is off the chart.

Look closely at the chart and you will see two POI I added, an airplane for Webster Field, and a coffee cup icon at Chancellor's Point for a lunch stop. They are points of interest and not part of the waypoints for the route.

The final basic operation is to print the chart and any associated route planning. Clicking the Printer icon gives you choices of which printer, number of copies, etc. You may want to print to a .pdf file and save it to your library of charts. It can be printed to paper from the .pdf file. You can print the information in the Routes and Markers tab by looking for the Print button on the properties tab.

I hope this is useful for planning kayak trips. Send me your feedback at heimlichfamily@comcast.net.

Paddler Profile: Meet Laura Scharle

Lives in: Ocean Pines, MD

Real job: Interpretive Programs Manager for Delaware State Parks, Owner/Founder of Scharle Outdoor Rec Consulting, LLC

Do you regularly attend a CPA Piracy? No, most trips are a pretty far drive for me.

Number of years paddling?
16

How did you get involved in sea kayaking? I paddled recreational kayaks for a few years and wanted to start going longer distances.

What boat(s) do you paddle?
14' Perception Solé and a 12' Necky Looksha

Rudder or skeg? Rudder, but I'm curious about skegs!

Type of paddle used? I have nothing fancy - love my Bending Branches paddle with padded grips.

Do you do any other paddling than sea kayaking? I sometimes lead guided trips for Delaware State Parks on sit-on-top kayaks, and we have a sit-on-top tandem now to take my son out, but when it's just me, I only paddle my Perception Solé.

Do you regularly do any other outdoor activities? My family and I hike, camp, and fish, but kayaking is always my first choice for an outdoor activity!

How often do you paddle between May and October? Weekly on average, wish I had time to go more!

Do any winter paddling? I soooo want to! I have been on the fence about purchasing a dry suit. But I have no friends down here that would go with me in the winter (safely) and I'm not sure I'm ready to paddle alone. My husband has a dry suit and kayak-fishes in the winter, but he never wants to paddle where I want to! :)

Favorite local paddling location? All over Delmarva. I have a paddling blog and a goal to paddle around the whole peninsula (www.LauraPaddlesDelmarva.com). I also write and do marketing for www.VirginiaWaterTrails.org

Favorite CPA trip you've ever been on and why? I haven't been able to make a trip yet!

Coolest paddling trip you've ever been on anywhere and why? Kayak camping at Mockhorn Island really stands out, as well as camping at Saxis WMA. The stretch between Hacks Neck and Broadway Landing (just south of Onancock) was pretty impressive with tons of dolphin sightings and sand bars to explore.

Scariest/most dangerous paddling trip/incident and why? I got stuck in the mud at low tide behind Metompkin Island back in 2015 when I was 7 weeks pregnant. I was alone and it was terrifying. It was the only time I considered using my VHF radio to call the Coast Guard. Somehow I shimmied across the mud for some distance before making it into deeper water.

Bucket list trips? Tangier and Smith Islands, Norway, a flatwater canyon out west, circumnavigating Fisherman Island (will likely do this with hubby soon), kayak-camping the coast of Georgia, and some urban paddling (maybe NYC?)

Three things you like most about paddling? It's the only thing I truly do for me. It keeps me grounded. I love seeing landscapes that hikers and boaters will never see. It's an awesome family activity, as we've been taking my son kayaking since he was 2!

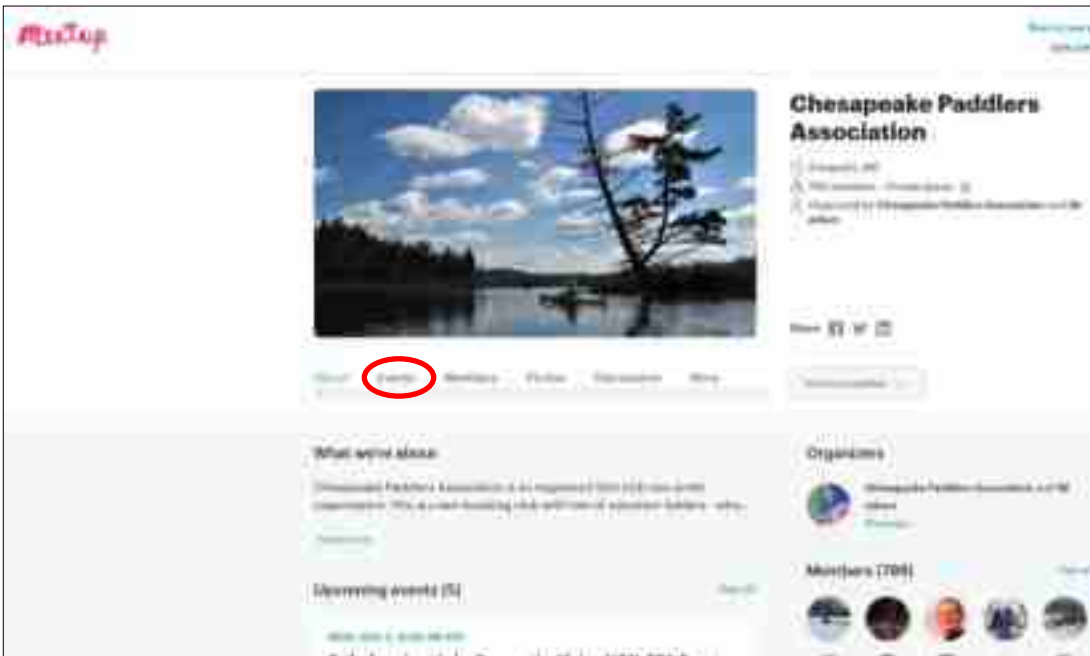
What do you like about CPA? I've only attended the SK101 program back in April. Great experience, looking forward to more!

What other paddling clubs/groups do you belong to? None. I'm an ACA L1 instructor, but that's not really a club.

One unusual non-paddling thing we'd be surprised to know about you? I fire an 1894 Lyle gun at work. It's basically a small line-throwing cannon. It's the only piece of artillery designed to save lives, rather than take them. I am a certified black powder safety officer, trained by the National Park Service.



Upcoming CPA events, Annual Meeting Nov 6



The CPA Annual Meeting will be held on November 6, 2022 at NOON at the Cult Classic Brewery, 1169 Shopping Center Road, Stevensville, MD 21666.

Check the [CPA Meetup page](#) for further details and information on other CPA events.

All participants should download the [updated CPA Waiver](#) and read the [CPA COVID-19 event guidelines](#) before participating in any in-person Club activity.

Classifieds

Eddyline Wind Dancer kayak for sale

Eddyline Wind Dancer kayak and assorted gear for sale, \$1,000. Gear for sale includes:

1. Yakama cartop carrier (2 rollers)
2. Voyage Wooden Paddle (w. flex safety strap)
3. Snap Dragon spray skirt
4. 3 PFDs (life jackets): Lotus PFD (male); Lotus PFD (female); Aqua-Mate PFD (old)
5. Voyageur water pump
6. Dry Sack Seattle Inlet Pack
7. DG gloves
8. Maps/safety tips/contacts

Contact Nick at 410-266-5411



The Chesapeake Paddlers Association, Inc.

The mission of the Chesapeake Paddlers Association is to provide a way for people to enjoy sea kayaking within the Chesapeake Bay area and to promote safe sea kayaking practices through educating the local sea kayaking community and the interested public.

Websites: www.cpakayaker.com, [CPA Facebook page](#); [CPA Meetup page](#)

Officers

Coordinator coordinator@cpakayaker.com
Bill Smith 407-489-7191

Secretary/Membership membership@cpakayaker.com
Sue Stevens
410-531-5641
c/o CPA, P.O. Box 341, Greenbelt, MD 20768

Treasurer — Rich Stevens treasurer@cpakayaker.com

Steering Committee steering_committee@cpakayaker.com
Lisa Arrasmith
Beth Boyd
Marilyn Cooper
Paula Hubbard 407-619-2896
Katherine Neale
Gary Trotter

Librarian — John Gibbs 703-922-7686 [Library](#)

Gear Volunteer — Marla Aron [Gear Page](#)

Webmaster/E-Mail List Administrators
webmaster@cpakayaker.com

Paula Hubbard
Ralph Heimlich
Rich Stevens

Newsletter Team news_editor@cpakayaker.com
Ralph Heimlich — Editor
Sue Stevens — Digital Distribution

The Chesapeake Paddler

The *Chesapeake Paddler* is published 10 times a year, with combination issues in Nov/Dec and Jan/Feb. The deadline for submitting copy is the 15th of the preceding month. Articles and illustrations (graphics, photos) should be submitted as separate attachments to: news_editor@cpakayaker.com

The newsletter may be reprinted whole or in part if credit is given to this newsletter and any identified author (unless an article is specifically copyrighted), and a courtesy copy is sent to the Editor. The download link or file for the electronic version of this newsletter may not be posted or forwarded to non-members without the express consent of the Coordinator or Editor.

Email Distribution, Dues Payments and Ad policy

All *Paddler* newsletters are sent via email with a link to the current monthly issue. Please be sure to keep your email address current to keep receiving the *Paddler* newsletter and for reminders of when your membership is up for renewal by contacting the CPA Secretary at membership@cpakayaker.com.

If your CPA membership has expired, or will expire soon, please send in your dues to: CPA, P.O. Box 341, Greenbelt, MD 20768-0341 or use the [Online Membership](#) option to use PayPal or find more information about membership.

Display advertising that relates to the interests of our readers is accepted, contact the editor at news_editor@cpakayaker.com for ad rates and specifications. Public service announcements and personal ads to sell kayaks/ accessories are published at no charge; non-members pay \$10 per ad.

Pirate Groups

Pirates of Algonkian
pirates_algonkian@cpakayaker.com
James Higgins 571-659-3319

Pirates of Arundell
pirates_pier7@cpakayaker.com
Rich Stevens 410-507-4972
Béla Máriássy 301-249-4895
Greg Welker 410-531-5641
Sue Stevens

Pirates of Baltimore
pirates_baltimore@cpakayaker.com
Bob Shakeshaft 410-939-0269
Sophie Troy
Suzanne Farace

Pirates of Eastern Shore
pirates_easternshore@cpakayaker.com
VACANT — Please consider volunteering

Pirates of Georgetown [pi-rates_georgetown@cpakayaker.com](mailto:pirates_georgetown@cpakayaker.com)
Jesse Aronson 571-969-1539
Tom Heneghan 571-969-1866
Rob Pearlman 240-688-6340
Larry Ichter 703-915-7446

Pirates of the North
pirates_north@cpakayaker.com
Bob Shakeshaft 410-939-0269
Joan Sweet, Jerry Sweet

Pirates of Occoquan
pirates_occoquan@cpakayaker.com
Jim Zawlocki 703-378-7536

Pirates of Patuxent
pirates_patuxent@cpakayaker.com
Jenny Plummer-Welker 301-249-4895
Don Polakovics 301-247-8133

Pirates of Potomac
pirates_potomac@cpakayaker.com
John Gibbs 703-922-7686
Bob Maynes 703-527-5299

Pirates of Sugarloaf
pirates_sugarloaf@cpakayaker.com
Laurie Collins
Marilyn Cooper